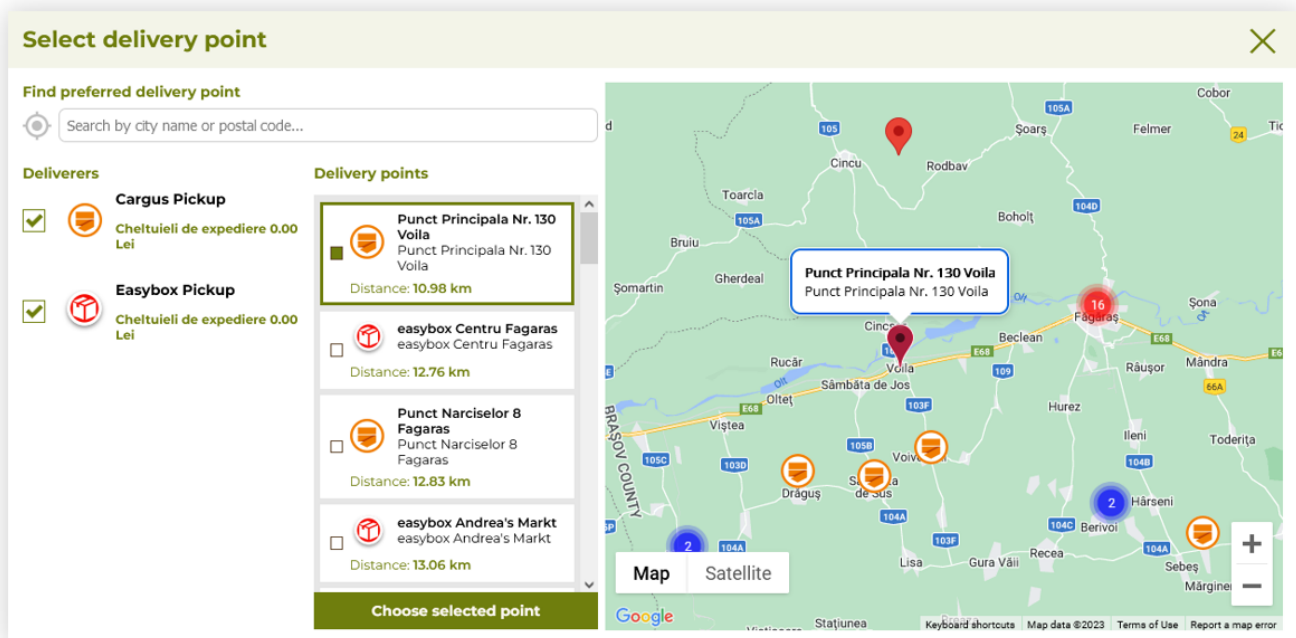


Delivery point widget

/ Getting started

In this article, you will find information about the delivery point widget. The delivery point widget allows selecting delivery services that deliver to parcels to be shown as one delivery option during the order process and will both be visible on the map at the same time with customization options.



Visualization of the delivery point widget functionality

Table of contents:

1. [Configuring the delivery point widget](#)
 1. [Delivery types / list configuration](#)
 2. [System / settings configuration](#)
2. [Customer perspective](#)

/ Configuring the delivery point widget

Delivery types / list configuration

In order to add multiple delivery options to one delivery widget you have to navigate to delivery types and turn on the switches on the desired delivery options.

You can access delivery types tab in the:

System > Delivery types / list

Cargus Pickup

General data

Is active?

ON III

Public name *

Cargus Pickup

Public description *

Cargus Pickup

Export tag

DEL_NOR ▼

Tracking link

You can use {TRACKING_NR} placeholder which will be replaced by tracking number

Sort order *

16

Is in delivery point group?

ON III

1

Salvează

Show usage in altshops

Show available zip codes

Visualization of the delivery types / list

In the **Delivery types / list** expand your desired delivery option that delivers to the parcels and select the new **Is in delivery point group? (1)** switch. By turning this switch ON you are adding the selected delivery option to the group. Multiple delivery options can be in the group.

Remember

In order for a delivery method to be visible for the customers it needs to be enabled both in the **Delivery types / list** and in the desired altshop. You can find more information about activating the delivery types in the altshops in the [Delivery costs / list - browsing and managing delivery costs](#) article.

System / settings configuration

For further configuration of the functionality you have to navigate to:

System > System / settings > Built-in options > Delivery point map

1 Delivery point map

Default latitude

49.804

Default map center latitude when user location cannot be obtained

Default longitude

15.937

Default map center longitude when user location cannot be obtained

Default zoom

8

Default zoom level when user location cannot be obtained

Clustering enabled

ON

Enables clustering of delivery points on the map. It groups them when map is zoomed out, but introduces significant performance penalty.

Visualization of the delivery point map settings

In the delivery point map you can find the following options:

- **Default latitude** - A default map center latitude when user location cannot be obtained
- **Default longitude** - A default map center longitude when user location cannot be obtained
- **Default zoom** - A default zoom level when user location cannot be obtained. This value can be set between 0 and 21, where 21 is the closest one, and 0 farthest away.
- **Clustering enabled** - Enables clustering of delivery points on the map. It groups them when the map is zoomed out, but introduces a significant performance penalty.

/ Customer perspective

The new delivery point widget can be accessed by the customers in the cart process on the "Select the delivery method" step

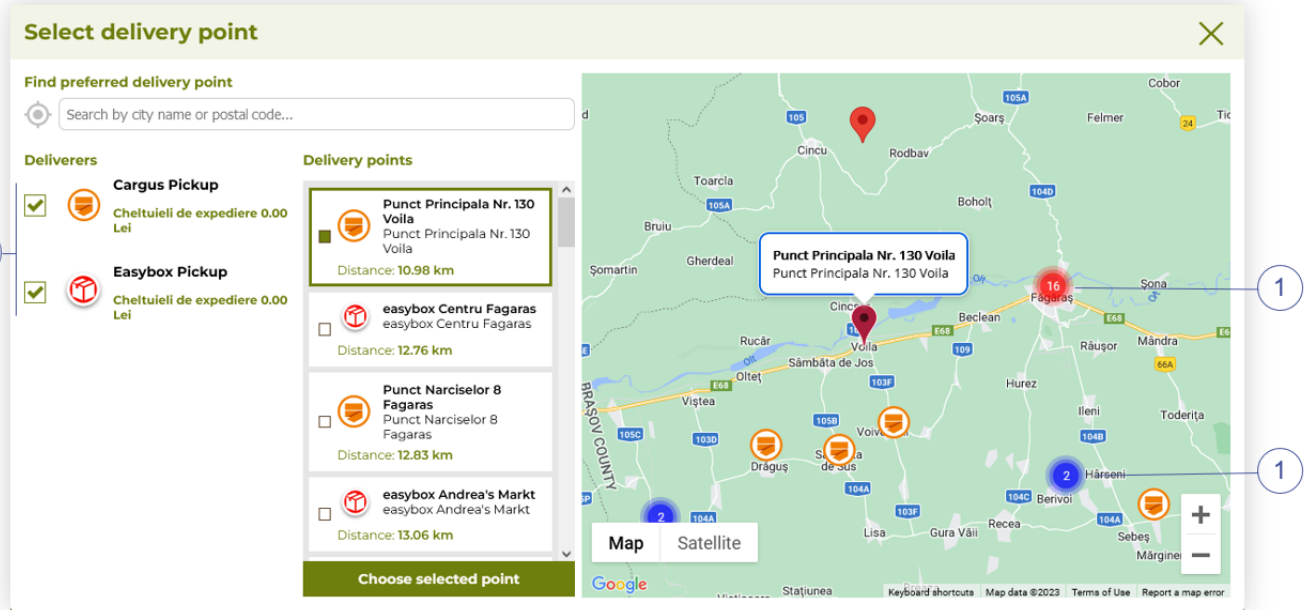


Visualization of the delivery method step in the cart process

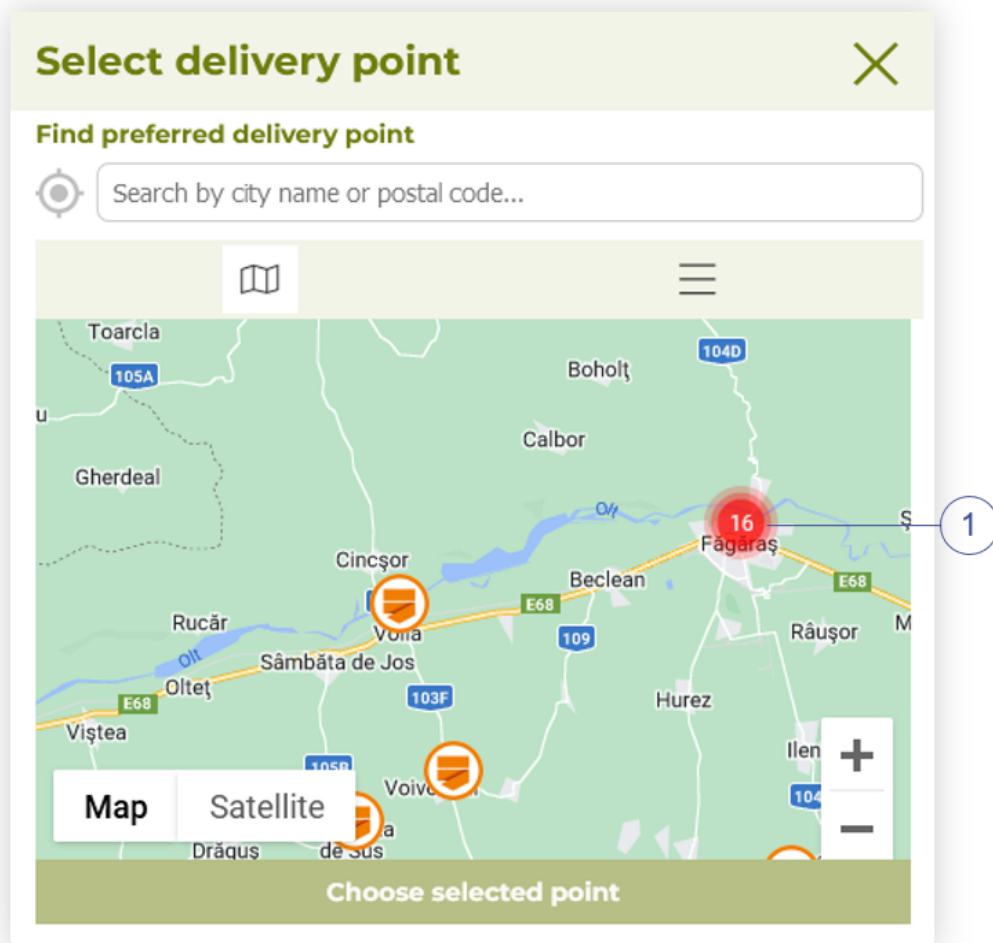
When customer selects the delivery point map he will see points near his location if he allowed for a location sharing on their device or a default view configured in the [System / settings](#).

Customer is able to search the map for their desired delivery point and if there are too many parcels to show them next to each other they are being merged into one single icon with a number of parcels in this region **(1)**.

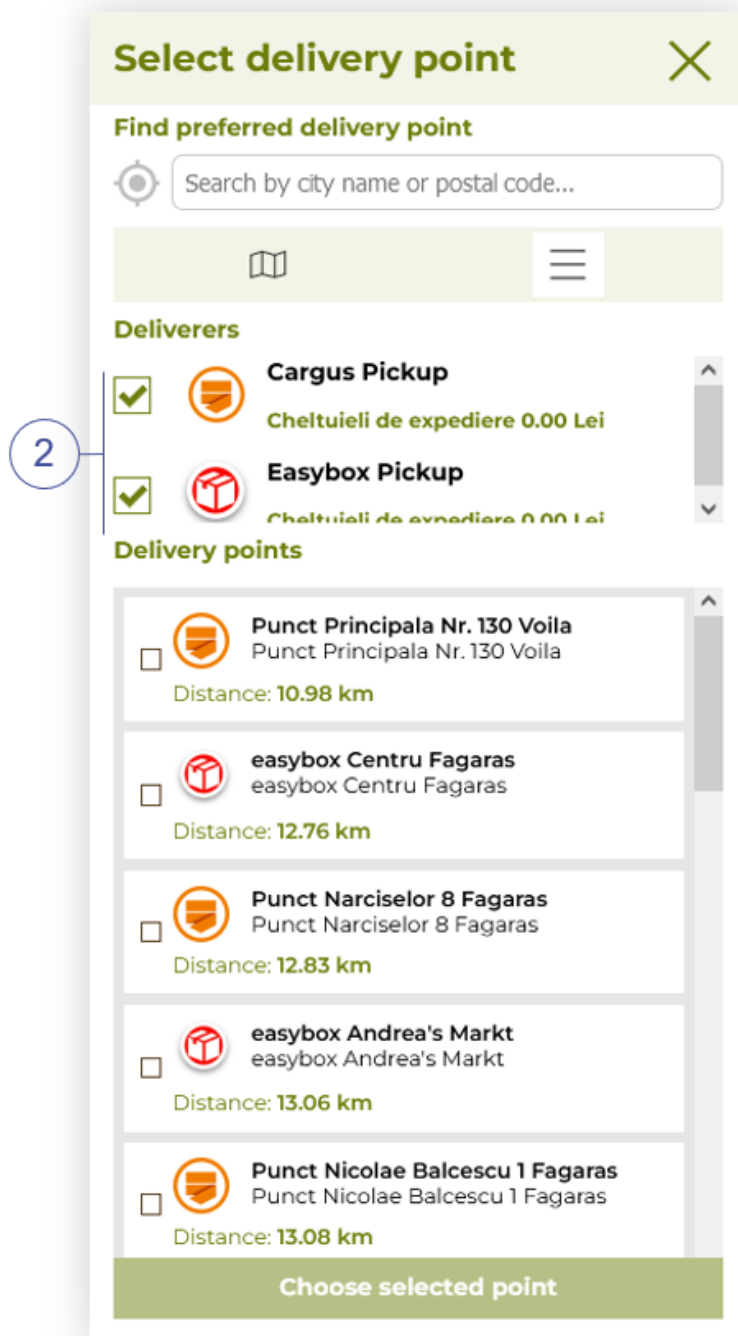
Customers are also able to deselect the delivery companies they do not prefer **(2)**.



Visualization of the delivery point map (desktop)



Visualization of the delivery point map (mobile)



Visualization of the delivery points (mobile)

Revision #2

Created 27 November 2024 21:06:00 by Tau Ceti

Updated 27 November 2024 21:19:00 by Tau Ceti